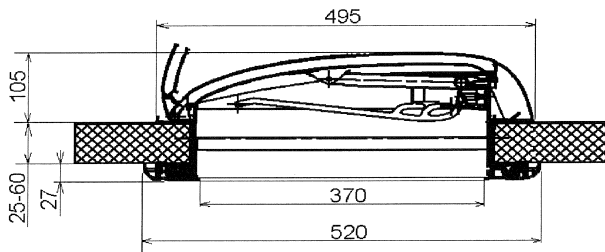


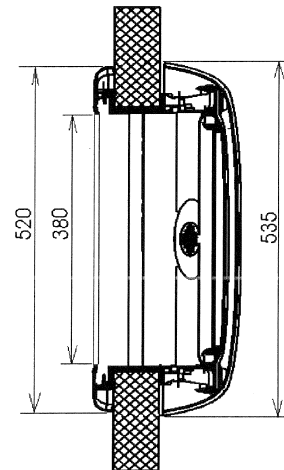
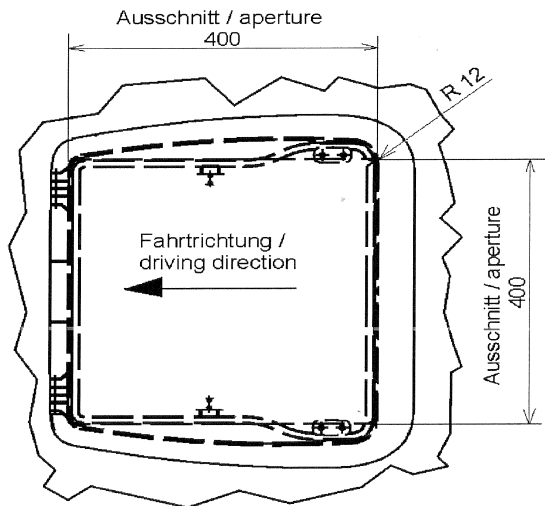
MINI HEKI 400X400 ROOFLIGHT

Mini-Heki -3/4
31.3 Technical Drawing.DOC
DOK1095 / 051220

Technical Drawing Mini - Heki



Öffnungswinkel / opening angle = ca. 50°
Gewicht / weight approx = 3,3 kg

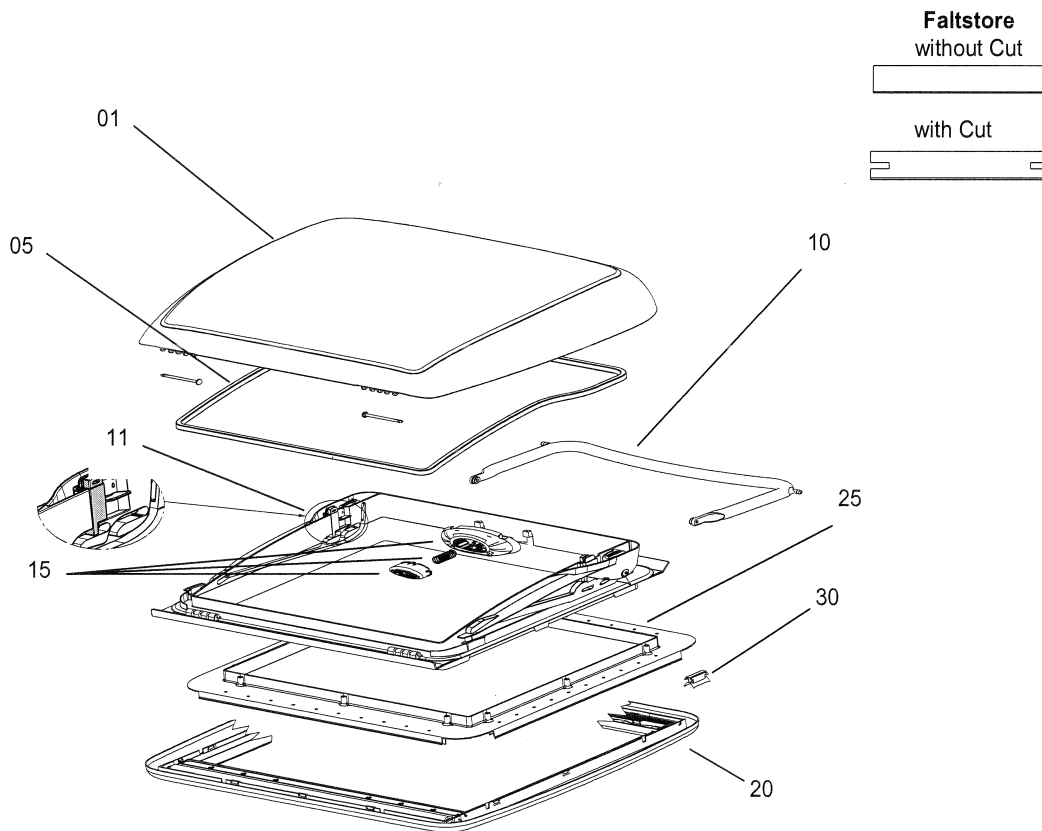


 Dometic

 SEITZ

	Description	Part No.	Pack. Unit
01	Glass complete (without seal, with hinge bolt)	BG 1423	1
	Glass complete (with seal and hinge bolt)	BG 1424	1
05	Seal	BG 1327	1
10	Bow with fixing parts	BG 1328	1
11	Safety parts for operating bar	BG 1726	1
15	Push button	BG 1329	1
20	Interior frame complete (with rollo)	BG 1330	1
25	Mounting frame cpl. For roof thickness 25-42 mm, RAL 7035	BG 14470901*	1
	Mounting frame cpl. For roof thickness 43-60 mm, RAL 7035	BG 14470902*	1
	Mounting frame cpl. For roof thickness 25-42 mm, RAL 9001	BG 14472501	1
	Mounting frame cpl. For roof thickness 43-60 mm, RAL 9001	BG 14472502	1
30	Spring clamp for interior frame	BG 1113	1 set

Important: When ordering specify - description, colour of frame, colour of fly net, quantity, roof thickness, type of ventilation (with or without free ventilation), with or without cut at both sides of the pleated material.



Dometic

