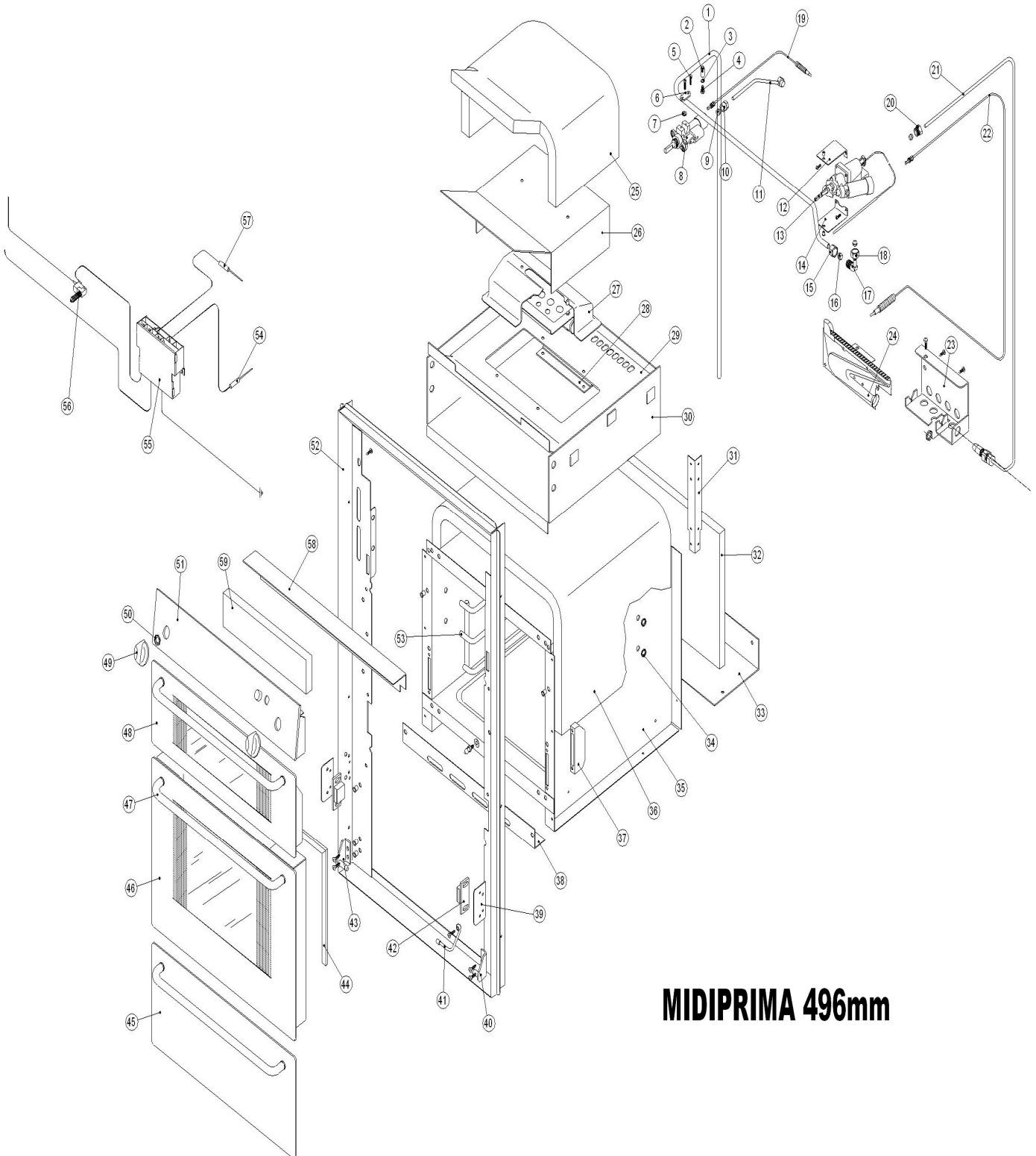


OP60000 MIDIPRIMA 496mm



MIDIPRIMA 496mm

OP60000 MIDIPRIMA 496mm

DRAWING REF.	PART NUMBER	DESCRIPTION	QTY
1	MCO1981	INLET MANIFOLD PIPE	1
6	MCC0601	SADDLE CLAMP FOR TAP	1
7	PCC0711	TAP GASKET	1
8	PCC0719	TAP, GRILL FFD	1
9	PCO0365	OLIVE, 6mm	2
10	PCC0730	NUT, 6mm MALE	1
11	MCO1289	GRILLPIPE	1
12	MCO1838	UPPER BRACKET, TAP FIXING	1
13	PCO0452	THERMOSTAT TAP, OVEN	1
14	MCO1836	LOWER BRACKET, TAP FIXING	1
15	PCC0755	NUT, 8mm	1
16	PC0735	OLIVE, 8mm	2
17	PCO0173	ELBOW FITTING	1
18	PCO0167	NUT 8mm COMPRESSION	1
19	PCC1154	THERMOCOUPLE, 320mm GRILL	1
20	PCO0190	NUT, 6mm COMPRESSION	1
21	MAO1079	PIPE AND JET ASSEMBLY	1
22	PCO0158	THERMOCOUPLE 1000mm OVEN	1
23	MCO2005	BRACKET, BURNER FIXING	1
24	MAO0064	OVEN BURNER	1
25	PCO0554	INSULATION, GRILL COVER	1
26	MCO1796	FLUE GRILL COVER	1
27	MAO0045	GRILL ASSEMBLY	1
28	MCO1328	CLAMP, GRILL	1
29	MCO1930	ROOF.GRILLBOX	1
30	MCO2030	BODY, GRILLBOX	1
31	MCO1232	BRACKET, GRILLBOX SUPPORT	1
32	PCO0553	INSULATION, OVEN BACK	1
33	MCO1186	BRACKET, BOTTOM REAR	1
34	PCX0184	STARLOCK WASHERS	8
36	PCO0550	INSULATION, OVEN BODY	1
37	PCO0258/1	GUIDE, HINGE	2
38	MCO1184	BRACKET, BOTTOM FRONT	1
39	MCO1140.BK	TRIM, MAGNET BRACKET	2
40	MCO0684	DOOR HINGE RH	1
41	AC1501	TRAVEL LOCK	1
42	PCO0235	MAGNET	1
43	MCO0685	DOOR HINGE LH	1
44	PCO0649	DOOR SEAL	1
45	CONTACT LS	LOWER DOOR ASSEMBLY WITH HANDLE	1
46	CONTACT LS	OVEN DOOR ASSEMBLY	1
48	CONTACT LS	GRILL DOOR ASSEMBLY	1
49	SEE PHOTOS	CONTROL KNOBS	2
51	CONTACT LS	FASCIA ASSEMBLY	1
52	MAO0276.BK	TRIM OVEN SURROUND	1
53	PCO0282	SUPPORT, OVEN SHELF, CHROME	2
54	PCC1423	SPARK ELECTRODE, OVEN	1
55	PCC1399	SPARK GENERATOR	1
56	PCC1420	MICRO SWITCH, IGN	1
57	PCC1418	SPARK ELECTRODE, GRILL	1
58	MCO1964.BK	HEAT DEFLECTOR	1
	PCO0285	SHELF	1
	MAC0064	GRILLPAN & HANDLE	1
	PCC1186	GRILLPAN HANDLE	1
	PCC1190	TRIVET	1
	PCO0535	OVEN INNER GLASS	1