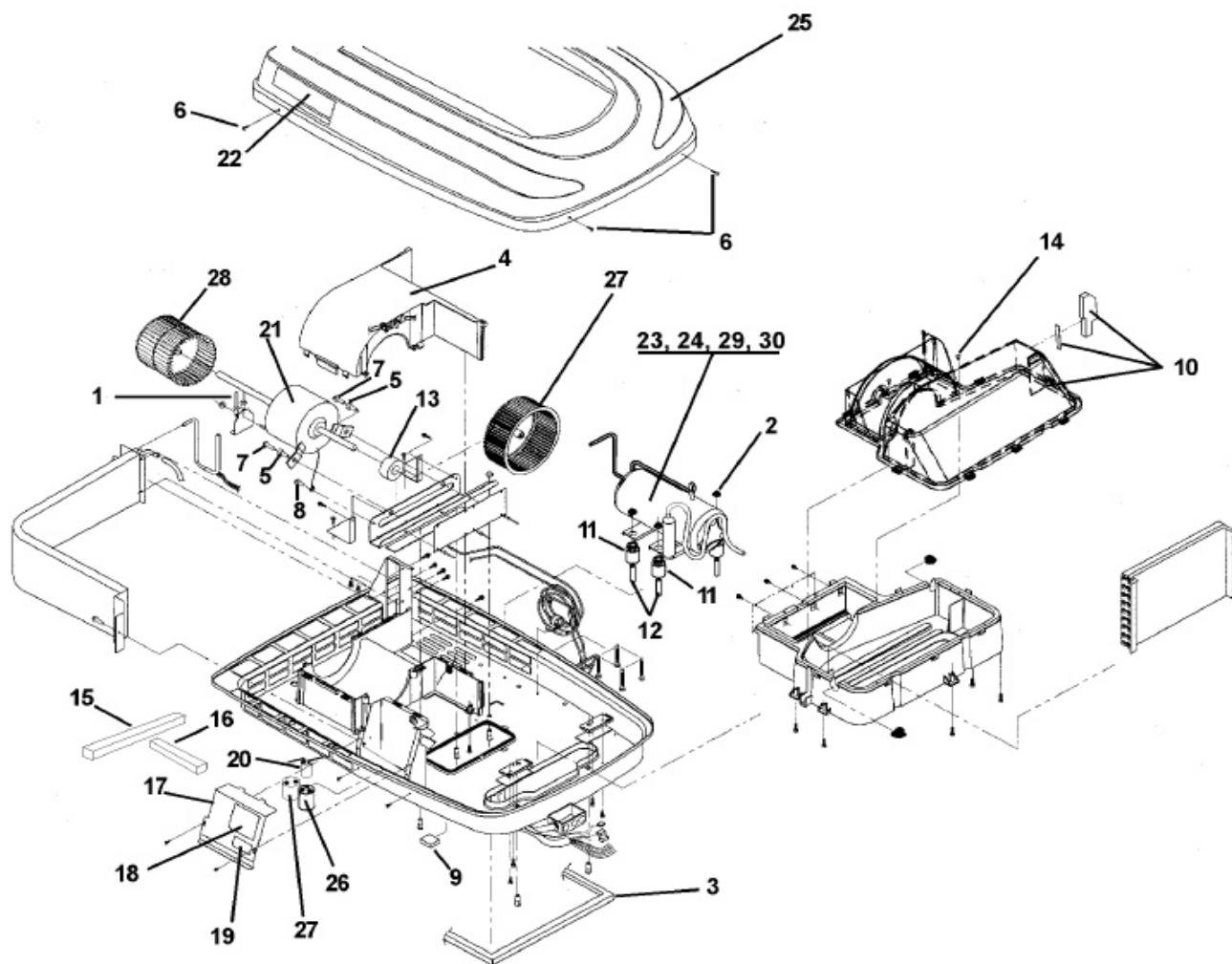
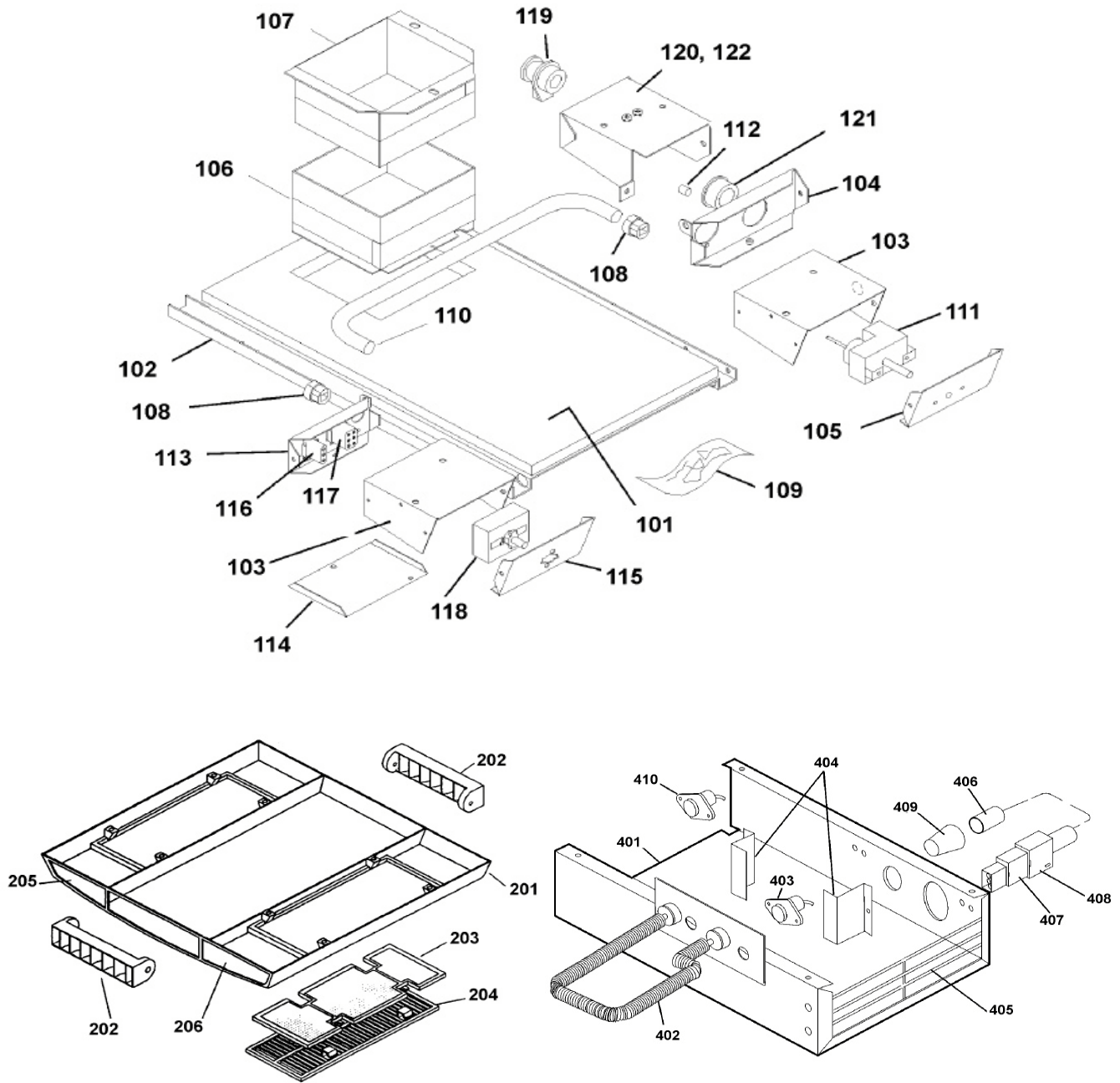


Net weight (kg) 45
 Cooling capacity (BTU/h) 3.2 kW (10.920)
 Fan speed (kW) 3.5
 Dimensions (LxWxH) (mm) 1025 x 737 x 245
 Full Load, cooling (A) 6.3
 Electrical rating 230V-50 Hz
 Circuit (A /sec) 29/0.15
 Air box (mm) 559 x 508 x 64
 Consumption, cooling mode (W) 1350
 Consumption, heating mode (W) 1600
 Roof cut out (mm) 355 x 355

HOUSING



AIR BOX



HOUSING

1	THIS PART IN NOT AVAILABE AS A SPARE	N/A
2	NUT	3063420024
3	GASKET	3100247000
4	COVER	3308017015
5	NUT 1/4" -20 X .80	3308108009
6	SCREW	3136850017
7	BOLT M 1/4" -20 X 1" HHW	3121100303
8	BOLT T 10-32 X .38" HHST	3122370020
9	LAMINA	3100587009
10	THIS PART IN NOT AVAILABE AS A SPARE	N/A
11	THIS PART IN NOT AVAILABE AS A SPARE	N/A
12	SHEATH COMPRESSOR	3100239072
13	THIS PART IN NOT AVAILABE AS A SPARE	N/A
15	SEALING 40 X 405 mm	3100286032

16	SEALING 1.5 X 10"	3100286032
17	THIS PART IN NOT AVAILABE AS A SPARE	N/A
18	THIS PART IN NOT AVAILABE AS A SPARE	N/A
19	THIS PART IN NOT AVAILABE AS A SPARE	N/A
20	STARTING RELAY COMPRESSOR	3106732013
21	THIS PART IN NOT AVAILABE AS A SPARE	N/A
22	DOMETIC BADGE	3308429004
23	THIS PART IN NOT AVAILABE AS A SPARE	N/A
24	THIS PART IN NOT AVAILABE AS A SPARE	N/A
25	MAIN COVER	3308046014
26	CAPACITOR 25uF	3100956030
27	REAR EVAPORATOR WHEEL	3308392004
28	FAN WHEEL	3100386006
29	LID	3102321001
30	GASKET	3102320003

AIR BOX

101	INSULATING PLATE	3107133005
102	THIS PART IN NOT AVAILABE AS A SPARE	N/A
103	THERMOSTAT COVER	3100275001
104	THIS PART IN NOT AVAILABE AS A SPARE	N/A
105	FRONT RIGHT THERMOSTAT	3100277031
106	THIS PART IN NOT AVAILABE AS A SPARE	N/A
107	AIR GUIDE	3100262025
108	THIS PART IN NOT AVAILABE AS A SPARE	N/A
109	THIS PART IN NOT AVAILABE AS A SPARE	N/A
110	THIS PART IN NOT AVAILABE AS A SPARE	N/A
111	THERMOSTAT	3100781008
112	THIS PART IN NOT AVAILABE AS A SPARE	N/A
113	THIS PART IN NOT AVAILABE AS A SPARE	N/A
114	THIS PART IN NOT AVAILABE AS A SPARE	N/A
115	THIS PART IN NOT AVAILABE AS A SPARE	N/A
116	THIS PART IN NOT AVAILABE AS A SPARE	N/A
117	THIS PART IN NOT AVAILABE AS A SPARE	N/A
118	SWITCH - EIGHT POLE	3106077005
119	THIS PART IN NOT AVAILABE AS A SPARE	N/A
120	COVER	3100231012
121	THIS PART IN NOT AVAILABE AS A SPARE	N/A
122	THIS PART IN NOT AVAILABE AS A SPARE	N/A

AIR DISTRIBUTOR

201	AIR DISTRIBUTOR WHITE	3100288129
202	GRATING	3100289002
203	FILTER	3100281009
204	AIR VENT GRID WHITE	3100270010
205	THIS PART IN NOT AVAILABE AS A SPARE	N/A
206	THIS PART IN NOT AVAILABE AS A SPARE	N/A

HEATING

401	THIS PART IN NOT AVAILABE AS A SPARE	N/A
403	OVERHEATING CUT OUT	3100962020
404	FIXING ANGLE	3106089000
405	GRATING	3100378003
406	THIS PART IN NOT AVAILABE AS A SPARE	N/A
407	CONNECTION WIRING THREE POLE	3106625001
408	ANTI STRAIN CLIP	3100486012
409	THIS PART IN NOT AVAILABE AS A SPARE	3029940180
410	SWITCH - EIGHT POLE	3100962012