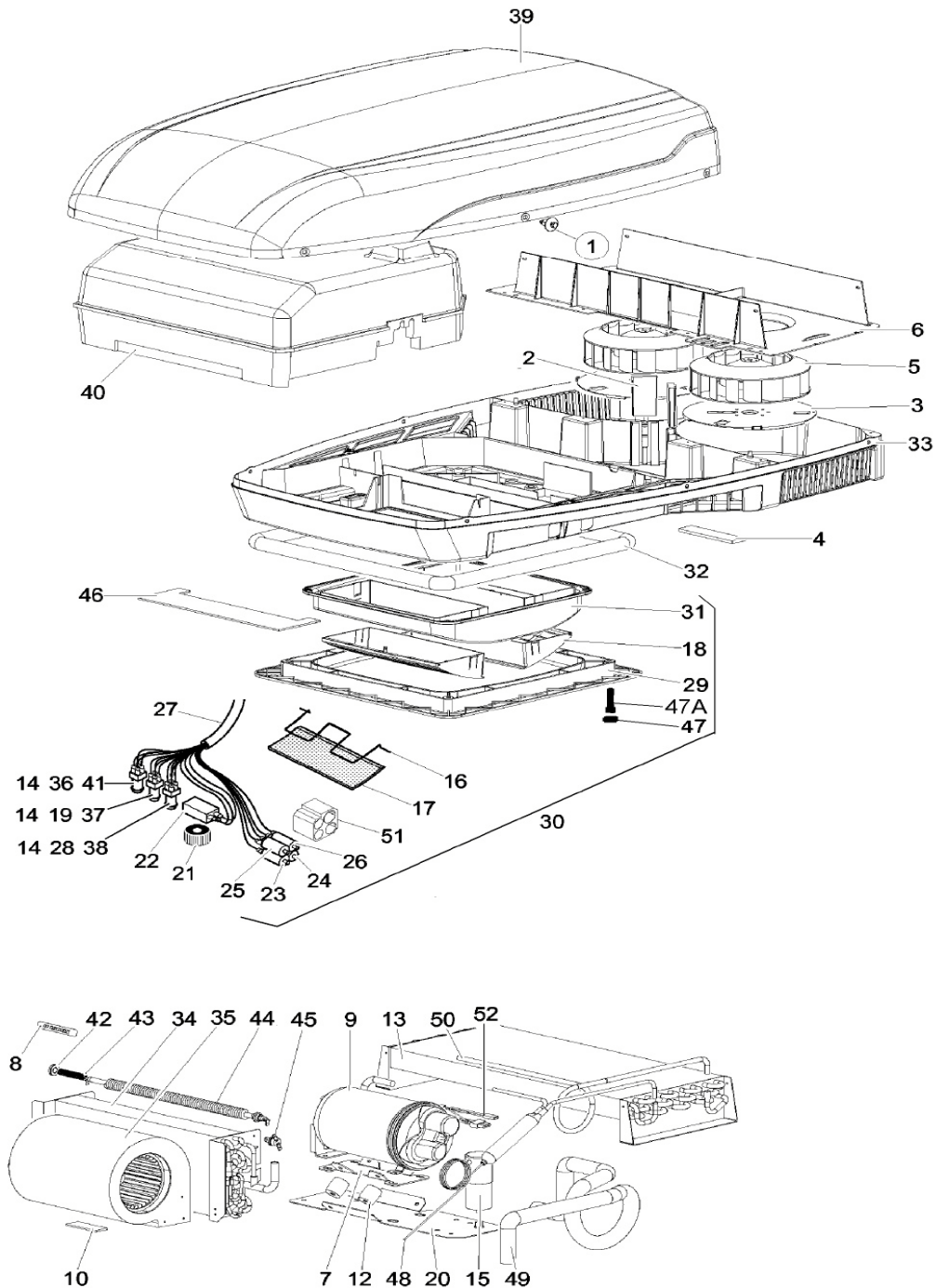


Net weight (kg) 30  
 Cooling capacity (BTU/h) 1.5 kW (5.200)  
 Fan speed (kW) 2  
 Dimensions (LxWxH) (mm) 980 x 650 x 235  
 Full Load, cooling (A) 2.9  
 Electrical rating 230V-50 Hz  
 Circuit (A /sec) 14/0.15  
 Consumption, cooling mode (W) 650  
 Consumption, heating mode (W) 800  
 Fuse (A) 4  
 Roof cut out (mm) 400 x 400



# COMPLETE APPLIANCE

1	RIVET TWO STAGE	3860160088
2	BOSS	3863500678
3	VENTILATOR PLATE	3862301326
4	SEAL	3863500686
5	VENTILATOR	3867200168
6	GUIDE SHEET AIR FLOW	3862301318
7	RETAINER FOR COMPRESSOR	3861402489
8	BADGE - B1500S	3868500517
9	COMPRESSOR	3867400057
10	SEAL	3863500546
12	BUSHES/SILENT BLOCK 25X30	3862500026
13	CAPACITOR	3861900219
14	SWITCH HOUSING	3866001484
15	CAPACITOR	3866001385
16	AIR FILTER SPRING CLIP	3860500051
17	AIR FILTER	3864400076
18	REAR AIR VENT GRID/BLACK	3862300401
19	SWITCH	3866001476
20	RETAINER	3861402497
21	THERMOSTAT KNOB	3862300542
22	THERMOSTAT	3865400026
23	CAPACITOR 2.5uF	3866001559
24	CAPACITOR 12uF	3866001567
25	CAPACITOR 2uF	3866001849
26	CAPACITOR	3866001674
27	WIRING HARNESS	3866002292
28	SWITCH	3866001468
29	INNER FRAME	3862300393
30	COMPLETE INNER FRAME WITH AIR DISTRIBUTOR	3869002240
31	AIR DISPENSER BODY	3862300385
32	MAIN SEAL / GASKET	3862500224
33	LOWER OUTER BODY	3862301201
34	REAR EVAPORATOR	3861900201
35	FRONT FAN UNIT	3867200069
36	SWITCH	3866001450
37	SWITCH DEV-DEV	3866001443
38	SWITCH NA-NC	3866001435
39	UPPER COVER/HOOD WHITE	3862301219
40	INNER HOUSING COVER	3863500660
41	SWITCH NA-NA	3866001427
42	WASHER	3861000200
43	SPRING	3860500036
44	HEATER ELEMENT 800W	3866001393
45	PROTECTION/CUT OUT	3866000544
46	INSULATION	3863500223
47	SCREW CAP COVER	3862300559
47A	BOLT	3860100498
48	FILTER	3862700766
49	PIPE	3862700717
50	PIPE	3862700725
51	RECEPTOR FOR CAPACITOR	3863500371
52	COMPRESSOR WIRING HARNESS	3866001401