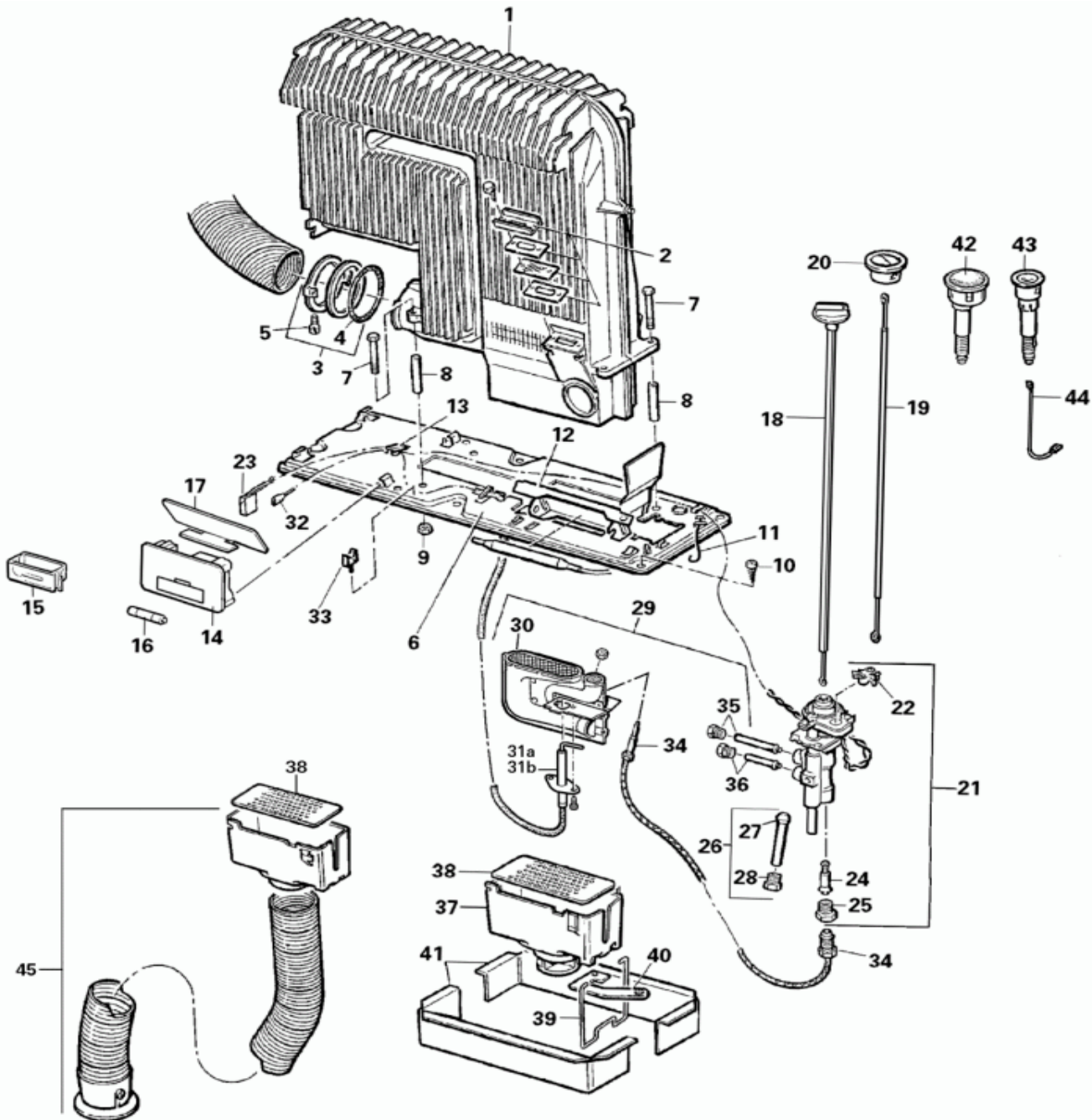




Trumatic S 3002

Heating Capacity 3400W
Gas consumption 30 - 280g/h
Weight 9.8Kg

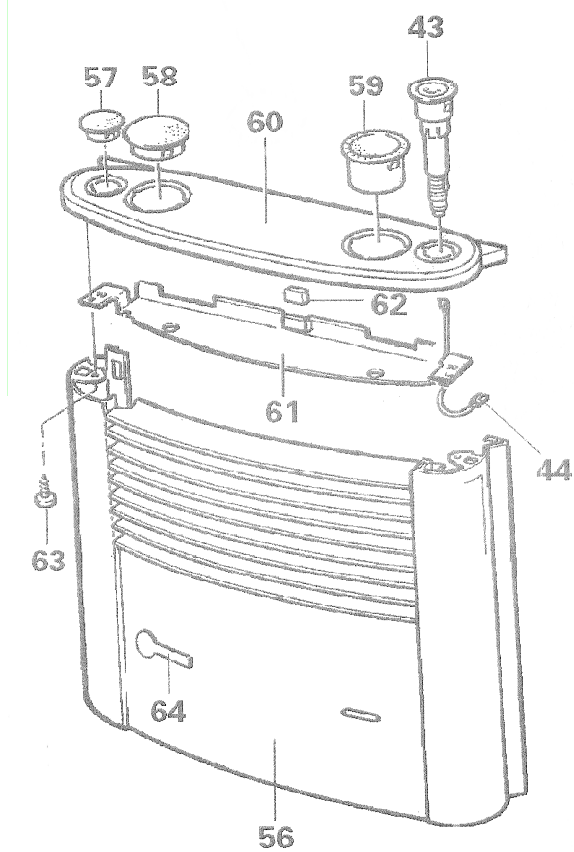


COMPLETE APPLIANCE

1	HEAT EXCHANGER COMPLETE WITH EXHAUST DUCT	30030-89400
2	MICA WINDOW - 42mm X 15mm	30030-42700
3	EXHAUST DUCT FITTING COMPLETE	30030-03600
4	O-RING 53 X 5	10030-26500
5	SCREW M5 X 16	10010-84500
6	FLOOR BASE COMPLETE WITH SCREWS	30030-33300
7	SCREW M 5 X 55	30030-85300
8	SPACER TUBE 8 X 1	30030-85400
9	NUT M 5 SELF-LOCKING	10020-18200
10	SCREW B 5.5 X 25	10010-66200
11	EARTH SPRING - ONLY S3002P	30030-85700
12	HOLDER FOR HEAT DETECTOR	30030-29800
13	EDGE PROTECTION	30030-29300
14	AUTO IGNITOR WITH CABLE	30050-53000
14x	ADAPTER CABLE AUTO IGN FOR USE IN APPLIANCES UNTIL 05/99	30050-53500
15	BATTERY BOX FOR AUTO IGNITOR UNTIL 05/99	30020-13300
16	BATTERY MIGNON 1.5v	30030-99200
17	HEAT DEFLECTOR	30030-16100
18	CONTROL ROD UNTIL 05/96	30030-01300
19	CONTROL ROD AFTER 05/96	30040-13600
20	CONTROL KNOB AFTER 05/96	30040-40400
21	SAFETY PILOT VALVE COMPLETE WITH ADAPTER PLUG	30050-58000
22	MICRO SWITCH COMPLETE WITH ADAPTER PLUG	30050-58100
22x	ADAPTER PLUG FOR CONNECTION TO AUTO IGN	30050-59200
23	SOCKET BOARD 2-PIN-BLACK	30010-23400
24	MAGNET INSET MINI	30030-12200
25	MS-NUT FOR MAGNET INSET	30030-12000
26	FEED PIPE & DOUBLE CONICAL RING & MALE FITTING UNTIL 05/99	30030-03100
27	DOUBLE CONICAL RING L8	30010-10900
28	MALE FITTING	30010-11000
29	BURNER COMPLETE S32P 30mbr FOR PIEZO(WITH NEW FRONT CASE) & SPARK ELECTRODE 75cm THERMOCOUPLE & BURNER TUBES	30040-64600
29	BURNER COMPLETE S32P 50mbr FOR PIEZO(WITH NEW FRONT CASE) & SPARK ELECTRODE 75cm THERMOCOUPLE & BURNER TUBES	30040-64700
29	BURNER COMPLETE S32P 30mbr FOR PIEZO(WITH OLD FRONT CASE) & SPARK ELECTRODE 95cm THERMOCOUPLE & BURNER TUBES	30030-04000
29	BURNER COMPLETE S32P 50mbr FOR PIEZO(WITH OLD FRONT CASE) & SPARK ELECTRODE 95cm THERMOCOUPLE & BURNER TUBES	30030-03900
29	BURNER COMPLETE S32 30mb & SPARK ELECTRODE 45cm THERMOCOUPLE & BURNER TUBES	30030-02000
29	BURNER COMPLETE S32 50mb & SPARK ELECTRODE 45cm THERMOCOUPLE & BURNER TUBES	30030-01900
30	BURNER 30 mbr SCREWED IGNITOR PLUG TO ORDER IN ADDITION	30040-18600
30	BURNER 50mbr SCREWED IGNITOR PLUG TO ORDER IN ADDITION	30040-18700
31a	SPARK ELECTRODE 75cm PIEZO FOR NEW DESIGN FRONT CASE	30040-64500
31a	SPARK ELECTRODE 95cm PEIZO FOR NEW DESIGN FRONT CASE	30030-03000
31a	SPARK ELECTRODE 45cm	30030-02900
31b	SPARK ELECTRODE 75cm WITH SCREW FOR OLD CASE DESIGN	30040-65900
31b	SPARK ELECTRODE 45cm WITH SCREW	30040-65800
31b	SPARK ELECTRODE 95cm WITH SCREW FOR OLD CASE DESIGN	30030-27300
32	FLAT CONNECTOR 2.8mm	30010-23500
33	MINI CABLE HOLDER	30030-84000
34	THERMOCOUPLE	30050-13900
35	PILOT TUBE 50mb WITH DOUBLE CONICAL RING L5 & MALE FITTING	30030-02300
35	PILOT TUBE 30mb WITH DOUBLE CONICAL RING L5 & MALE FITTING	30030-02400
36	BURNER TUBE 30mbr	30030-02200
36	BURNER TUBE 50mbr	30030-02100

37	EXTENSION COMPLETE WITH PLATE & SPRING	30030-04300
38	PERFORATED PLATE	30030-17500
39	EXTENSION SPRING	30030-28500
40	DISTANCE SHEET UNTIL 05/99	30030-19400
40	DISTANCE SHEET AFTER 05/99	30040-22000
41	FRAME COMPLETE	30030-16400
42	PIEZO IGN FOR APPLIANCES WITH OLD FRONT CASE DESIGN	30030-00300
43	PIEZO IGN FOR APPLIANCES WITH NEW FRONT CASE DESIGN	30040-62900
44	EARTH CABLE	30040-64000
45	AIR INTAKE EXTENSION WITH 50cm TUBE	30030-04800

FRONT CASE NEW DESIGN



56	FRONT CASE BROWN	30040-50100
56	FRONT CASE GREY	30040-50200
57	BLANK COVER 35mm	30040-60800
58	BLANK COVER 52mm	30040-60900
59	KNOB SOCKET	30040-60700
60	FACIA BLACK	30040-63000
61		N/A
62	RETAINER	30040-60000
63		N/A
64	PLATE FOR GREY CASE	30040-35000
64	PLATE FOR BROWN CASE	30040-36500

JJM.02/10/07