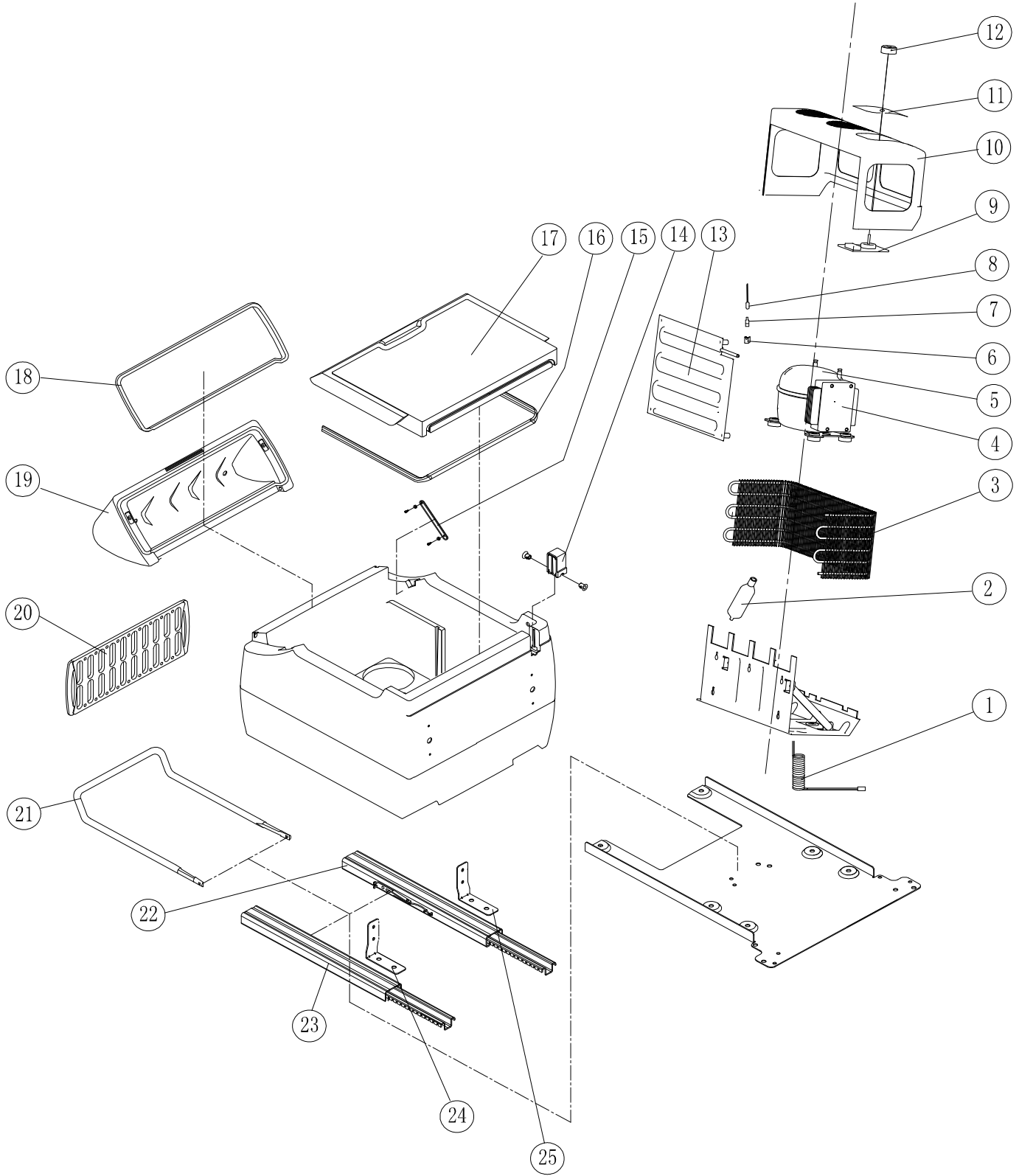


Teile/ Parts
für / for
MAN



**Teile/ Parts
für / for
MAN**



Pos. Nr.	Marking in English	Bezeichnung in deutsch	Art.- Nr. / Part.-No. 81.61335-6048/60	Art.- Nr. / Part.-No. 81.61335-6054/59	Art.- Nr. / Part.-No. 81.61335-6055/61	Art.- Nr. / Part.-No. 81.61335-6058/62	Art.- Nr. / Part.-No. CS- MAN	Art.- Nr./ Part.- Nr. MAN	Stück/ Piece	
1	Power Cord	Anschlußkabel	37-JW-3050EH	37-JW-3050EH	37-JW-3050EH	37-JW-3050EH	37-JW-3050EH	81.25411.6046	1	
2	Dryer	Trockner	4440400002	4440400002	4440400002	4440400002	4440400002		1	
3	Condenser	Kondensator	4440200003	4440200003	4440200003	4440200003	4440200003		1	
4	Elektronik unit	Elektronik	4441000001	4441000001	4441000001	4441000001	4441000001	81.26901-0045	1	
5	Compressor	Kompressor	4440100001	4440100001	4440100001	4440100001	4440100001		1	
6	Temp.- sensor holder	Temperaturfühlerhalter	40-87-23AB90	40-87-23AB90	40-87-23AB90	40-87-23AB90	40-87-23AB90		1	
7	Silicon insert	Silicon-Einleger	42-01-6330	42-01-6330	42-01-6330	42-01-6330	42-01-6330		1	
8	Temperature sensor	Temperaturfühler	22-03-PX42HSM	22-03-PX42HSM	22-03-PX42HSM	22-03-PX42HSM	22-03-PX42HSM	81.25936-0049	1	
9	Main PCB	Platine	4441100021*	4441100021*	4441100021*	4441100021*	4441100021*	81.26901-0044*	1	
10	Compressor cover	Kondensatorabdeckung	40-87-06ABXX	40-87-06ABXX	40-87-06ABXX	40-87-06ABXX	40-87-06ABXX		1	
11	Label	Aufkleber	53-87-WO1A	53-87-WO1A	53-87-WO1A	53-87-WO1A	53-87-WO1A		1	
12	Thermostat knob	Thermostatknopf	40-87-15AB8J	40-87-15AB8J	40-87-15AB8J	40-87-15AB8J	40-87-15AB8J		1	
13	Evaporator	Verdampfer	4440300019	4440300019	4440300019	4440300019	4440300019		1	
14	suction pipe cover	Saugleitungsabdeckung	81.61335-0059	81.61335-0059	81.61335-0059	81.61335-0059		81.61335-0059	1	
15	Lid check strap	Deckel Fangband	40-C7-02PE90	40-C7-02PE90	40-C7-02PE90	40-C7-02PE90		81.61335-0060	1	
16	Flat lid gasket	Dichtung flacher Deckel	42-01-987SPC	42-01-987SPC	42-01-987SPC	42-01-987SPC			1	
17	Flat lid	Flacher Deckel	81.61335-6052	81.61335-6052	81.61335-6052	81.61335-6052		81.61335-6052	1	
18	High lid gasket	Dichtung hoher Deckel	42-01-987SPC	42-01-987SPC	42-01-987SPC	42-01-987SPC			1	
19	High lid	Hoher Deckel	81.61335-6051	81.61335-6051	81.61335-6051	81.61335-6051		81.61335-6051	1	
20	Dividerwall	Trenngitter	81.61335-0058	81.61335-0058	81.61335-0058	81.61335-0058		81.61335-0058	1	
21	Handle	Griff	46-87-14SB	46-87-14SB	46-87-14SB	46-87-14SB			1	
22	Rail	Schiene links	1007612		1007612				1	
23	Rail	Schiene rechts	1007616		1007616				1	
24	Angle holder right	Haltewinkel rechts	46-87-16SB		46-87-16SB				1	
25	Angle holder left	Haltewinkel links	46-87-17SB		46-87-17SB				1	
	Retaining	Haltebolzen	46-87-21SC							
	Washer for lid check strap	Unterlegsch. Deckelfangband			49-QX-M4008A1				2	
	Screw for lid chek strap	Schraube f. Deckelfangband			47-BX-S4017BA1				2	

* Note! With exchange of the temperature sensor or the main PCB the box must be converted by evaporator temperature sensor on ambient temperature feelers.
The rule main PCB due to it is marked by Rev. B.