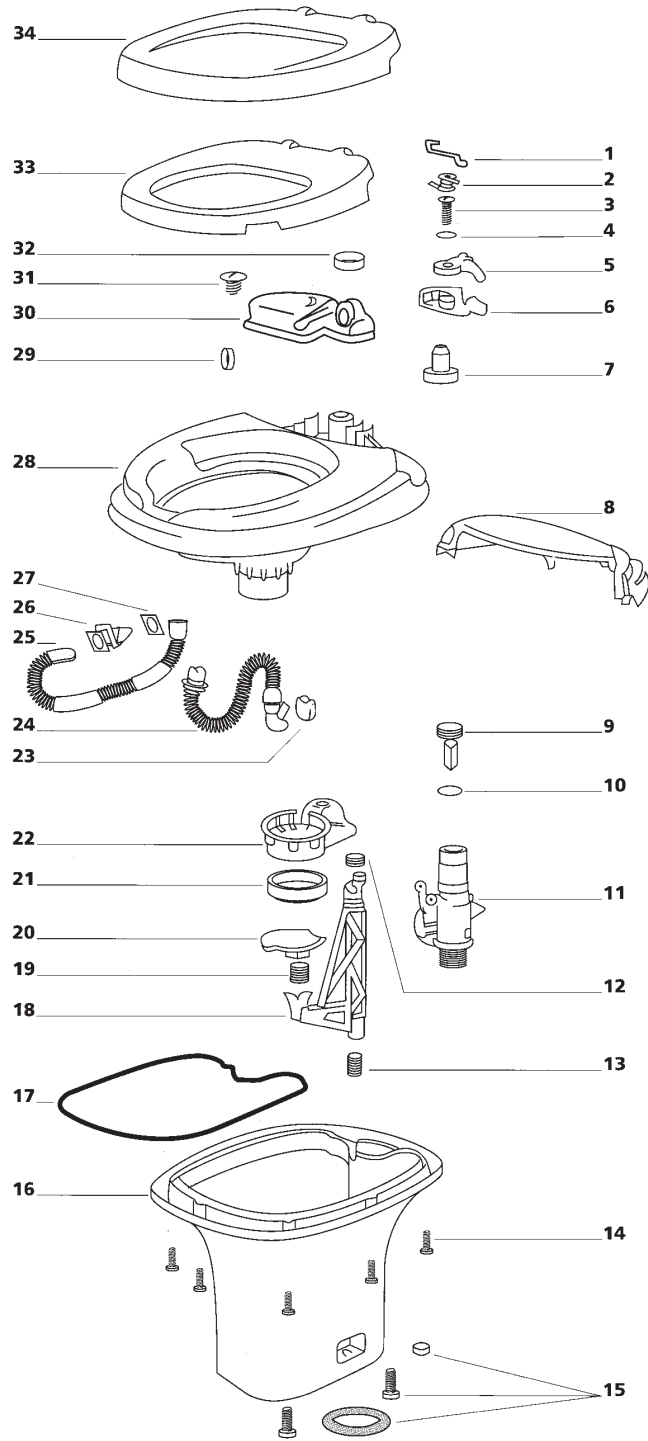


# Aqua Magic IV



(LO-033.00)

## Aqua Magic IV high and low (LO-071.00)

| Spare part             | Single spare part number | Assembly spare part number | Available in colour number |
|------------------------|--------------------------|----------------------------|----------------------------|
| 1. Link ball valve     | 33315                    |                            |                            |
| 2. Spring lever return | 33319                    |                            |                            |
| 3. Screw               |                          |                            |                            |
| 4. Washer              | 12872                    |                            |                            |
| 5. Water lever         | 33101                    |                            | 62                         |
| 6. Flush lever         | 33102                    |                            |                            |
| 7. Bearing             | 12516                    |                            |                            |
| 8. Cover mechanism     | 33112/33113              |                            |                            |
| 9. Float               |                          |                            |                            |
| 10. O-ring             |                          | 24846                      |                            |
| 11. Watervalve         |                          |                            |                            |
| 12. Actuator arm seal  | 33307                    |                            |                            |
| 13. Actuator spring    | 33316                    |                            |                            |
| 14. Screw              | 33322                    |                            |                            |
| 15. Closet bolt pkg.   | 12524                    |                            |                            |
| 16. Base               |                          |                            |                            |
| 17. P.T.I.             |                          |                            |                            |
| 18. Actuator arm       | 12479 high<br>12923 low  |                            |                            |
| 19. Blade spring       | 33317                    |                            |                            |
| 20. Blade              | 33308                    |                            |                            |
| 21. Blade seal         | 12481                    |                            |                            |
| 22. Blade track        | 33318                    |                            |                            |
| 23. Flapper            | 33314                    |                            |                            |
| 24. Overflow tube      | 33313                    |                            |                            |
| 25. Flush tube         | 33312                    |                            |                            |
| 26. Nozzle             | 12522                    |                            | 62                         |
| 27. Gasket             | 12521                    |                            |                            |
| 28. Bowl               |                          |                            |                            |
| 29. Seal               | 12508                    |                            |                            |
| 30. Reservoir tank     | 24630                    |                            |                            |
| 31. Screw              | 12659                    |                            |                            |
| 32. Retaining band     | 33323                    |                            |                            |
| 33. Seat               |                          | 24641                      | 10/57/62                   |
| 34. Cover              |                          |                            |                            |